

NEWSLETTER NUMBER 3

January 2021



Interreg
Italy - Croatia
RECOLOR

European Regional Development Fund



EUROPEAN UNION

PROJECT NAME

RECOLOR

Reviving and Enhancing artworks and Landscapes Of the Adriatic.

PROJECT PARTNERS

Emilia-Romagna Region - General Directorate Economics of Knowledge,
Labor and Enterprise - LEAD partner

Polytechnic of Šibenik

Municipality of Campobasso

Municipality of Cividale Del Friuli

Montefeltro Sviluppo Consortium

Alma Mater Studiorum – University of Bologna

Municipality of Labin

City of Zadar

Park as a Labin's, Istrian, Croatian and European story

The previous six-month period was extremely rich in activities of promotion and development of pilot actions aimed at the Dubrova Sculpture Park. Not only was the Strategy of cultural and tourist valorization of the Park presented to the public, but work on the Park Sustainability Study also began.

September 2020. - The 42. Mediterranean Sculpture Symposium was held.

50 years of tradition of one of the most important art events in this area, the Mediterranean Sculpture Symposium [MKS], which has been held almost continuously since the 1970s in the area of Dubrova near Labin.

From September 18 to October 10, 2020, the Croatian sculptor Denis Krašković participated in the 42nd Mediterranean Sculpture Symposium and with his sculpture the Snail joined other great artists who left their mark in the Park.

Again the treetops on Dubrova were white with stone dust, and the sound of the stone forming merged with the chirping of birds. Another sculpture has permanently found its place among meadow fragrant flowers, it will persist in its permanence and importance over the years, providing new generations with a place to play, think, and sometimes meditate.

At the very opening of the 42nd MSK, the mayor of Labin conveyed this message: “Here we have a beautiful and valuable space with a vision of, I would dare say, a bright future. I thank everyone who created the MSK for years, and above all those who, unfortunately, are no longer with us, especially the artist and the man who founded the MSK, lived and gave himself for the idea of the MSK, Mr. and academic sculptor, Josip Diminić, and everyone to others who have made this special place out of only one meadow. And I hope that together we will make the MSK in Dubrova not only our, Labin's story, but that the story be Istrian, and I would dare to tell a Croatian and European story. I believe that Dubrova will become a place and a landscape where culture and art, nature and tourism merge, and where we all merge as people. ”



Photo:Gloria Sellan,
Carving snail in process.

October 2020 - The Strategy of Cultural and Tourist Valorization of the Dubrova Sculpture Park was presented

After seven months of drafting the Strategy, in which, in addition to the City of Labin and the Mediterranean Sculpture Symposium, the administrative departments of the Istrian County (the one for culture and homeland, tourism and sustainable development) and the Tourist Board of Labin and Sveta Nedelja Municipality and others participated. presented to the public at the Kocka Information Center in the Park. The bilingual strategy of about 80 pages brings three priority areas of valorization of cultural and natural heritage of this area aimed at tourism:

1. Increasing the sustainability of the Park's management in the direction of sustainable cultural and recreational tourism while maintaining the primary function and identity of the Park - the availability of culture and the creation of new cultural products,
2. Verification and valorization of cultural heritage (cultural property),
3. Valorization of the natural environment in which the sculptures are located.



Presenting the Strategy, press conference (up).

Photo: Gloria Sellan

Study contractor - Vedran Vivoda (right).

Photo: Renata Kiršić



November 2020 - Sustainability Study of the Dubrova Sculpture Park

The maker of the Study, Crane 51, began the first phase of the Study in November last year, and it is expected to be completed soon. This study will show the City of Labin, the ICC Association, but also the general public in what ways the sustainability of the Park can be achieved in financial, environmental and social terms. We believe that already this year the Study will be crucial for placing new products and services on the market, which would enable the diversification of the association's revenues and ensure stability in the implementation of the program as well as in site management.

Renata Kiršić, President of the ICC, thanked the City of Labin for including this Park in the international project RECOLOR, in which all partners and associated stakeholders were given the opportunity to exchange experiences and gain new knowledge and use quality documents as a basis for further development.

The realization of the pilot project in Šibenik is focused on three main activities: the organization of a green market, painting workshops and various cultural / entertainment events. With the opening of the green market on the location of the Mala loža (Piccola loggia), this small picturesque square next to the church of St. Ivan in the old town of Šibenik was revitalized. Polytechnic of Šibenik provided multifunctional counters where local family farms presented and sold their products in the morning hours. In the afternoon, painting colonies were organized during which the artists visited several locations in Šibenik and its surroundings, painting the views of the city of Šibenik. At the end of the painting colonies, the east wall of the church of St. Ivan along with the multifunctional counters served as a background for the exhibition of paintings created during the workshops



Photo: Ivan Buvinić and Valerio Baranovic



ZADAR

09

Exploratory archeological works organized by the City of Zadar as part of the implementation of the RECOLOR project began on Monday, September 7, 2020 at the Zadar Sphinx.

All research works are carried out in accordance with the special conditions for the protection of cultural property set by the Zadar Conservation Department, since the park with Villa Atilia, Sphinx sculpture and other elements in the park is part of the cultural and historical ensemble protected as a cultural asset of Croatia. Archaeological excavations are currently being carried out on the Sphinx sculpture itself.



As part of the conservation and restoration works, a 3D scan will be carried out and the layout of the original historical model will be made according to the available historical documentation. Laboratory research will also be carried out on the negative elements that affect the decay of the sculpture, and the effect of salt and the proximity of the sea is especially important. Based on the research, it will be easier to create a recipe for the rehabilitation and repair of the concrete layer, and also to determine the optimal impregnation layer that will protect the sculpture after the work is completed. To make the final layer, it is important to know the condition of the metal reinforcement and it will be checked by testing with a profometer and thermo-camera, since so far the amount of iron reinforcement hiding under the upper layer of concrete has not been determined more precisely.



CIVIDALE DEL FRIULI

In the last few months the municipality of Cividale del Friuli has carried out the first phase of its pilot action, particularly regarding The Monastery of Santa Maria in Valle and the Lombard Temple, the historical core of Cividale del Friuli.

A campaign of cutting-edge diagnostic investigations and 3D surveys, ultraviolet fluorescence photographs, a multispectral shooting, to analyze the ancient pigments, and much more were performed in the Lombard temple both for archaeological analysis reasons and for future 3d reconstruction and virtual restoration.

A reorganization and implementation was also carried out on the cartographic database concerning the most important archaeological excavations on the Cividale site, which is fundamental to have precise planimetric references that are very important both from an archaeological point of view and for the future development of the Cividale pilot action.



Beyond the technicalities, the archaeologist in charge of supervising the Cividale project has had and will have a few meetings to explain intentions and prospects of the Recolor Project and Cividale's pilot action to the students of some high schools in Cividale.

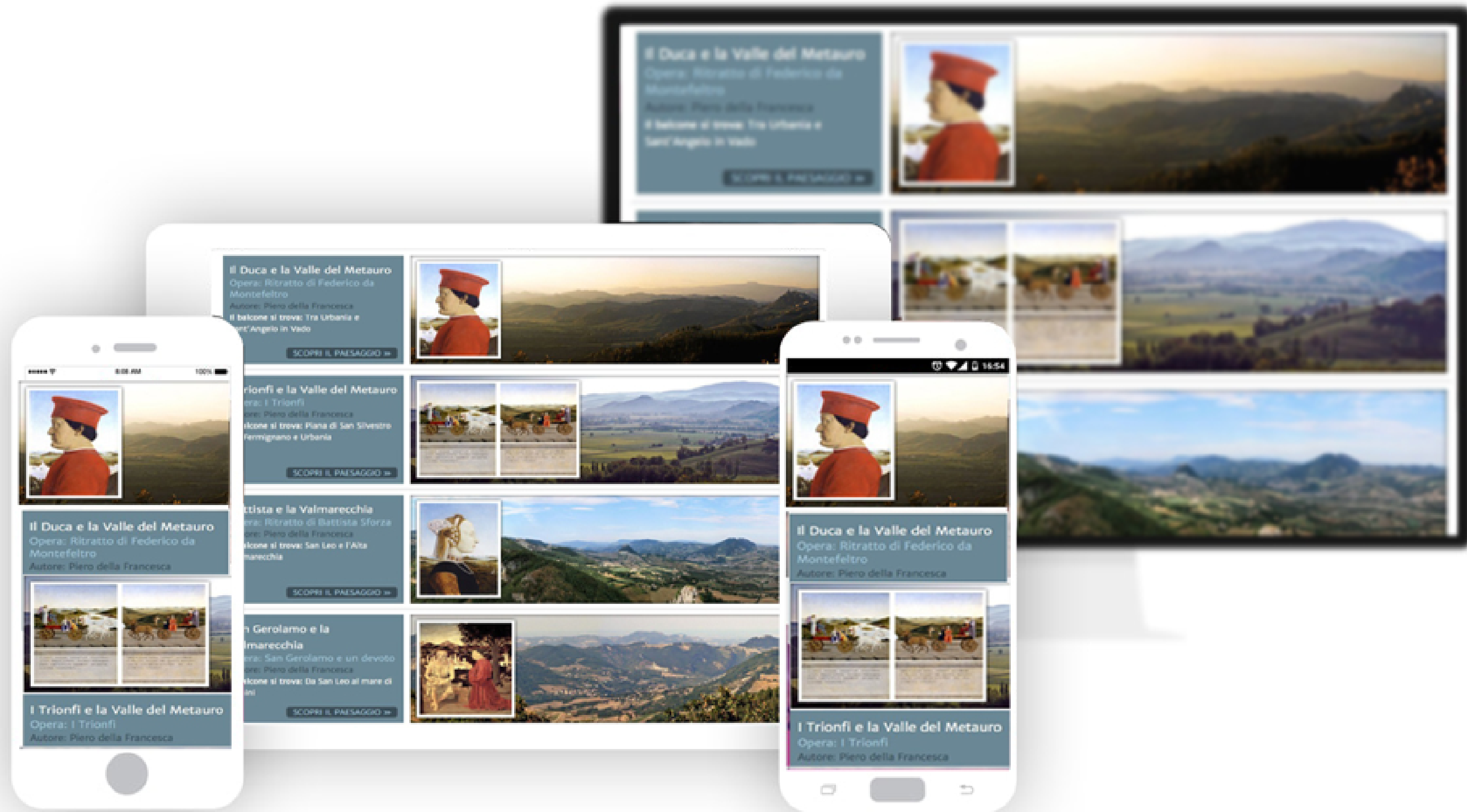
Photo G. Burello, details of the stucco decorations of the Longobard Temple, VIII century.



EMILIA-ROMAGNA REGION AND LAG MONTEFELTRO SVILUPPO

14

The collaboration between the Lead Partner, Emilia-Romagna Region, and the neighboring Partner, GAL Montefeltro and Sviluppo continues for the realization of the ambitious pilot project: the creation of a new and unprecedented tourist scenario, which enhances the landscape of the extraordinary territory of Montefeltro, portrayed in some of the major works of art of the Italian Renaissance, such as the "Gioconda" (Mona Lisa) by Leonardo Da Vinci, the "Baptism of Christ" and the "Portraits of the Dukes of Urbino" by Piero Della Francesca and many others. Right from the start, the planning of strategic communication played a fundamental role for the realization of the pilot and to guarantee usability and a structured engagement of its target thanks to new technologies. In fact, despite logistical difficulties due to the Covid19 pandemic, the far-sighted and well-structured implementation methodology that has always underpinned the pilot has allowed us to continue working following the initial guidelines.



The realization of the Web App and the e-book related to the pilot project are underway through in-depth iconographic research, innovative digitization techniques, contributions from art history and geomorphology experts, web and press marketing activities for local, national and international promotion. Tourism promotion experts are working on the definition of the tourism product, while the planning and construction phase of the observation spots from which it will be possible to observe the correspondence between works of art and landscapes will soon be boosted.

Furthermore, the research does not stop, and new correspondences between the landscapes of Montefeltro have been found in three artworks by Leonardo di Vinci that had not yet been geographically identified. This important discovery accredits the climate of cultural fervor and dynamism of the Duchy of Urbino: artists, mathematicians and architects used to come to these lands and find a natural landscape of great impact and inspiration waiting for them. A landscape that today offers itself to tourists and visitors as a true outdoor museum to be discovered.



Mt. Aquilone present landscape (a) compared with Leonardo's drawing (Sheet Windsor, Royal Collection, Ph Scala, Firenze)(b). From "The usefulness of geomorphology for finding the landscapes drawn by Leonardo Da Vinci in the Montefeltro region (Central Italy)" by Rosetta Borchia, Olivia Nesci

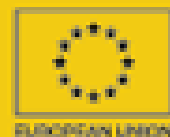
Also, on the communication front, some project gadgets were created in eco-sustainable materials, water bottles and block-notes, while an ethical fashion laboratory, Cartiera, realized the shopping bags.



per
for



Interreg
Italy - Croatia



CARTIERA è un laboratorio di moda etica che realizza accessori in pelle e tessuto lavorati secondo le tecniche artigiane del Made in Italy, recuperando materie prime dall'industria dell'alta moda e impiegando persone in condizioni di svantaggio.

CARTIERA is an ethical fashion laboratory, where leather and fabric accessories are realized, implementing the artisan techniques of Made in Italy. Materials are recovered from the High fashion industry and processed by disadvantaged people.



CAST - UNIVERSITY OF BOLOGNA

14



Interreg
Italy - Croatia
RECOLOR

European Regional Development Fund



EUROPEAN UNION

We're social • follow us:



@projectrecolor

#ProjectRecolor
#InterregRecolor

www.italy-croatia.eu/web/recolor